

The Artistic Expression of Interior Design Style in Spatial Environment

Chang LIU

Liaoning Communication University, Shenyang, 110136 Liaoning, China

1256155868@qq.com

Keywords: Interior design style, Space environment, Artistic expression

Abstract: The scope to be considered in interior design is only the artistry and rationality of space division within an independent use space, and appropriate adjustments should be made based on the architectural design to achieve the design objectives. We should adopt modern methods for selection and processing, with simple and clear shapes that can be directly used. For complex and bizarre shapes, we should remove exaggerated and Abstractexpression techniques, simplify and summarize them, without changing their original style and meaning, and make them meet the aesthetic requirements of current people. This article conducts in-depth research on the artistic expression of interior design style in spatial environment, and summarizes the artistic expression techniques of spatial environment in terms of color, shape, orientation, decoration, etc., which can make the sense of effect of indoor space different. For residential buildings, each unit belongs to different owners, and it is not necessary or possible to unify the local and overall styles. However, for a building with clear usage functions, it is important to unify the local and overall styles.

1. Introduction

Since human beings had architectural activities, people had the main place of life, and wells began to have requirements for the living environment. With the progress of human civilization and the improvement of cultural accomplishment, they also had higher and higher requirements for the surrounding living environment, so the art design of space environment came into being. "Artistic conception" is the soul and essence of interior design, and it is a high-level expression of interior design. "Artistic conception" is the realm pursued by China's traditional art, and it is the blend of emotion and scenery, and the unity of meaning and image. There is an ancient saying that "all calligraphy and painting should be viewed as its rhyme", and the "rhyme" mentioned here is a spiritual artistic conception beyond lines[1]. It is of great significance to review the rise and development of space environment art in China and make an objective evaluation of it. Environmental art has a wide range and a long history, which not only has the characteristics of general visual art, but also has the characteristics of science, technology and engineering. Interior design should only consider the artistry of an independent space and the rationality of space division, and make appropriate adjustments on the basis of architectural design to achieve the design purpose. We should choose and process in a modern way, with simple and clear shapes that can be used directly, and with complex and weird shapes, we should remove exaggerated and abstract expressions, simplify and summarize them, and make them meet the aesthetic requirements of people at present without changing their original styles and meanings[2]. At present, there are many styles of interior design, whether Chinese style, pastoral style, simple style or classical style, which can produce unexpected styles through their own expression[3]. The expression of environmental art in color, modeling, orientation, decoration and other aspects can make the indoor space feel different. For a house, each unit belongs to a different owner, so it is not necessary and impossible to unify the local and the whole. But for a building with clear functions, it is very important to unify the local and the whole styles.

2. The Principles of Drawing Inspiration from the Art of Spatial Environment in Interior Design

2.1 Atmosphere and Sentiment

The design effect of an interior design largely depends on whether it can convey the established atmosphere and atmosphere. For example, in the artistic expression of literati's indoor environment, they hope to express the literati atmosphere, have a strong cultural atmosphere, and can make people feel a cultural atmosphere. The expression of atmosphere and sentiment cannot be separated from the contribution of color. In addition to having an impact on the visual environment, indoor colors also directly affect people's clarity and psychology. Scientific color selection is beneficial for work and contributes to health. Properly processed colors can meet functional requirements and achieve beautiful effects[4]. Colors have a warm and cold feeling, and some colors create a warm feeling, such as red, which reminds people of flames, while orange and yellow remind people of the sun; Some colors can create a cold and cool feeling, such as blue, green, and purple. These colors are commonly used in cold drink halls.

The expression of atmosphere should vary from person to person. People with different personalities and identities have different expectations for the atmosphere and atmosphere. When expressing interior design, their own requirements should be the main focus, in order to design an environmental art space with atmosphere and atmosphere[5]. Applying these color emotions and their expression methods to interior decoration design can meet people's visual enjoyment; Adjusting people's psychological emotions; Adjust the intensity of indoor light; The actual environmental design effect of adjusting space size.

2.2 Concise and Clear

Interior design has developed to this day, although there are many new designs, and it also expresses novelty and fashion in the expression of environmental art, but it still cannot be separated from simplicity, and the complicated expression of indoor environmental art will also be unified on its basis, thus achieving a simplification and making people feel relaxed and happy[6-7]. In space design, we should avoid isolated and static volume combination and pursue moving and continuous space. When the indoor space is divided vertically with the optional hanging structure, the bottom interface of the upper space is not supported by walls or columns, but suspended by suspenders, or a small space is set up in the air with beams, which has a sense of "suspension" and "floating". For the space with limited horizontal area but large vertical scale, the layered treatment method is most often adopted[8]. Rooms are arranged in layers, and the middle is connected by stairs or turnstiles with steep slopes, which invisibly doubles the effective use area and is full of changes.

2.3 Exquisite and Generous

With exquisite and generous interior design, people feel a kind of momentum. In the process of interior decoration, we should take into account the methods and ways of expressing exquisiteness and generosity. The use of all kinds of wood, stone and cloth can produce exquisite and generous effects, which makes people suddenly see the light. Using the indispensable building components in indoor space, such as columns and walls, combined with the design concept of environmental protection design that light decoration and heavy decoration are advocated in today's society, we abandoned the traditional decorative style of dismantling large buildings and created a perfect living environment with soft decoration styles such as furniture, ornaments and accessories[9]. Furniture is an important part of indoor environment design, which forms an organic and unified whole with indoor environment. The creation of artistic conception of indoor environment is inseparable from the choice and organization of furniture. Furniture is the main role that reflects the indoor atmosphere and artistic effect. Indoor furnishings have a strong role in creating indoor "artistic conception". Different furnishings will make people have different associations, arouse different emotions, and form different styles and artistic conception of indoor space, which is easier to enhance the sense of exquisiteness[10].

3. Analysis of Artistic Expression of Interior Design Style in Spatial Environment

3.1 Ground Design

From the overall environmental effect of the space, the ground should match the ceiling and wall decoration, while also playing a complementary role with the indoor furniture style and furnishings. Material texture and texture properties have a significant impact on interior design. Glass and metal materials are widely used in interior design, especially for office buildings, large shopping malls, and banks. Glass and metal materials are essential for interior design. For example, the conference room adopts cohesion patterns to show the importance of the meeting. The color should be coordinated with the conference space to achieve a stable, serious, and cohesive effect; Secondly, it emphasizes the continuity and rhythm of the pattern, which has a certain degree of guidance and regularity, and is often used in hallways, corridors, and commonly used spaces; The third is to emphasize the abstract nature of patterns, which are free and varied, freely lively, and commonly used in irregular or freely arranged spaces.

For the integration of more ideas into office space, traditional office space is no longer a closed space, but gradually becomes an open area for work communication with the rapid iteration of information. This space accommodates new scenarios such as work, meetings, and even lectures, salons, and events, becoming a new medium to connect different forms of communication. As shown in Figure 1, in terms of material selection, the indoor office meeting room generally adopts a wooden veneer accompanied by mirrors and glass. This approach aims to maintain the commercial attributes of the office space, avoiding the strange circle that many shared office space designs fall into, overly pursuing entertainment and losing their original characteristics. This can allow people working in the office space to maintain the tone and enthusiasm of their work while being happy.

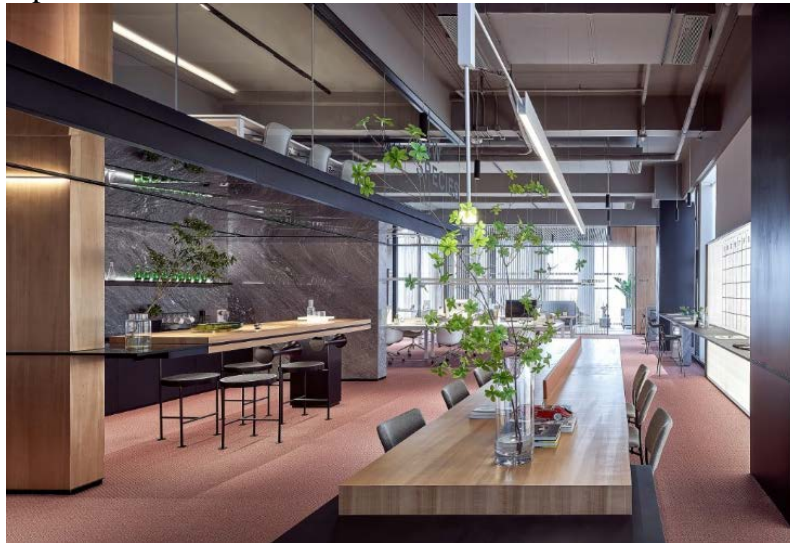


Fig.1 Indoor Floor Design

Choosing simple traditional patterns to match the patterns of other interfaces and decorating them with colors can maintain the elegant artistic effect of the interior. A concise ground design has become particularly important, with open office areas spaced apart from independent office and meeting areas, allowing users to efficiently and autonomously switch between two different types of office spaces as needed.

3.2 Wall Design

Wall is a part of the room that occupies more decoration, so the wall design is of great significance to the performance of indoor environment. When decorating the wall, we should fully consider the style of ceiling and floor, and make the wall and the whole space become a common and integrated whole. There are many kinds of wall decoration materials, such as stone, wood, glass, cloth, various fabrics, etc. Different materials are used according to various functional requirements of indoor space, and these series of decoration materials all play different roles and are inseparable. As shown in Figure 2, in the selection of wall materials, wood veneer with mirror and glass is

basically adopted as a whole, which is intended to maintain the business attribute of office space, avoid the strange circle that many shared office places fall into, and lose their original characteristics by pursuing entertainment excessively. In this way, people who work in the office space can keep the tone and enthusiasm of office at all times while being happy.

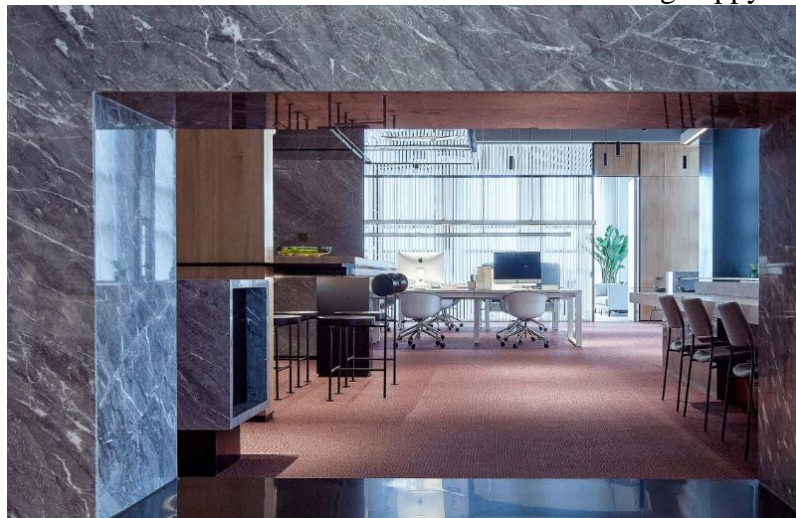


Fig.2 Interior Wall Design

The shape, pattern, color pattern, material texture and spatial expression of the wall are closely related. The choice of decorative forms of the wall should be based on the above principles, and there are roughly the following forms: paint decoration, plate decoration and veneer decoration.

3.3 Ceiling Design

Ceiling is one of the most important components in interior design, and it is also the most diverse part of interior space that can best reflect design ability and essence. In order to adapt to the diverse and complex social interactions and daily needs, shared spaces have emerged in environmental design. Shared space is often the center and transportation hub of large public buildings, containing a variety of spatial elements and facilities, and is a comprehensive and diverse flexible space. As shown in Figure 3, in terms of the height of the raised ceiling space, we focus on considering the user's sense of use, and plan the first and additional floors of the space reasonably to reduce the sense of oppression on users.

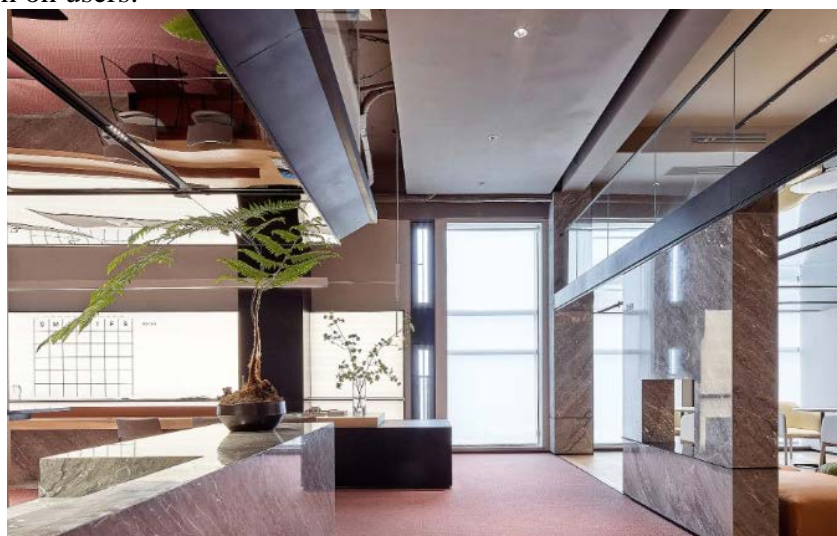


Fig.3 Interior Ceiling Design

When designing and applying, we should fully consider the concept of humanization, not only to achieve a beautiful and generous effect in environmental art, but also to ensure that the application of this design conforms to the principles of ergonomics, so that the center of the design always

revolves around the wishes of the interior space owner. The ceiling has strong impact, expressive power, and a strong sense of volume. By using different forms of expression, combined with lamp decoration, it can increase the appeal of the space, making the top design calm and atmospheric, modern and beautiful.

4. Conclusions

Indoor space design is developed around the core concept of “people-oriented”, which not only creates an ideal physical space environment to meet people's needs for indoor space functions, but also meets people's psychological aesthetic needs. Learn from foreign excellent design concepts, understand and recognize the design rules and their expression methods in the design process, and realize the original intention and concept of design in the process of artistic creation, so as to integrate the design ideas into the actual environment. Interior design should only consider the artistry of an independent space and the rationality of space division, and make appropriate adjustments on the basis of architectural design to achieve the design purpose. We should choose and process in a modern way. The simple and clear shapes can be used directly, and the complicated and weird shapes can be simplified and summarized without changing its original style and meaning, so as to meet the aesthetic requirements of people at present. In the indoor space environment, light is not only to meet people's visual needs, but also to form and change the space, which often forces us to separate the space in a design. Through the creation of artistic conception of indoor space, we can create a psychological space environment that can bring people artistic beauty, aesthetic taste and emotional pleasure.

References

- [1] Li H. Research on Processing Technology and Design Optimization of Indoor Soft Packaging Materials Based on Creation of Artistic Situation and Influence of Coastal Climate[J]. Journal of Coastal Research, 2020, 115(30):274-297.
- [2] Wang X. Optimization Design of Green Building Landscape Space Environment Based on VR Virtual Technology[J]. Journal of Physics: Conference Series, 2021, 1852(3):032035-032062.
- [3] Liu S, Bo Y, Huang L. Application of Image Style Transfer Technology in Interior Decoration Design Based on Ecological Environment[J]. Hindawi Limited, 2021, 55(31):46-72.
- [4] Wen Y, Leng J, Yu F, et al. Integrated design for underground space environment control of subway stations with atriums using piston ventilation[J]. Indoor and Built Environment, 2020, 29(9):104-134.
- [5] Mahmood S A. Visual Vision and Sensory Perception and its Relation to Interior Environment Design[J]. Journal of Physics: Conference Series, 2022, 48(11):46-68.
- [6] Xu J, Pang G. Approach to Optimizing Interior Design with Ecological Environment Materials[J]. Architecture Engineering and Science, 2020, 1(1):31-59.
- [7] Yang Y, Zou N. Graphic Development Environment in Interactive Computer Interior Design[J]. Journal of Physics: Conference Series, 2020, 1693(1):012125 -012144.
- [8] Li S, Huang J. Study on the Performance of Light and Shadow Effect in Computer Aided Interior Design[J]. Journal of Physics: Conference Series, 2021, 1748(2):022030-022055.
- [9] Zhang L, Jiuheng F U. New Chinese Style Interior Design Style--The Shang Zhou Style of “Ancient Rhyme”[J]. Vocational Technology, 2023, 25(10):36-54.
- [10] Liu B. Analysis of Modern Interior Design Language from the Perspective of Pop Art Style[J]. Art and Design, 2022, 11(2):11-23.